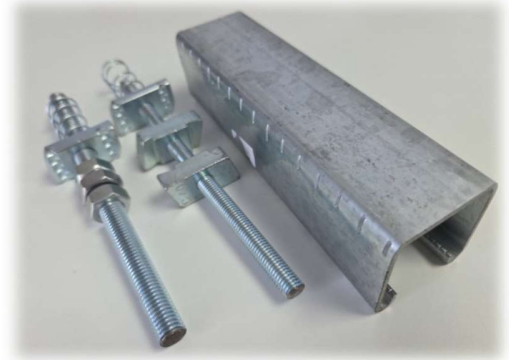


### Description

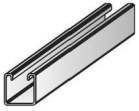
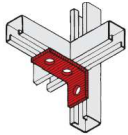
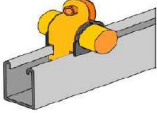
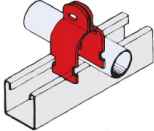
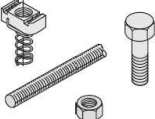
Unistrut is a versatile metal framing system designed for rapid, reliable support of mechanical, electrical, and structural installations. Its standardized C-channel profile allows contractors to build strong support structures without the need for welding or complex fabrication.

The system uses a unique combination of channels, brackets, and spring nuts, enabling components to be easily slotted, adjusted, and tightened on-site. This modular approach makes Unistrut highly adaptable for both new projects and retrofitting work.

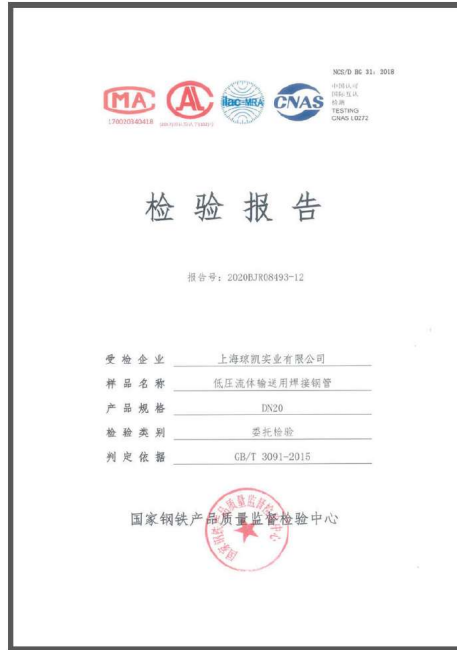


Commonly used in HVAC, electrical containment, pipe supports, and ceiling or equipment frameworks, Unistrut delivers durability, corrosion resistance, and long-term stability. Its flexibility and reusability make it a cost-effective and industry-trusted solution across commercial, industrial, and construction environments.

### Strut Framing System

Straight Sections	
Fittings	
Cushion Clamps	
Pipe Fitting Accessories	
Channel Nuts & Hardware	

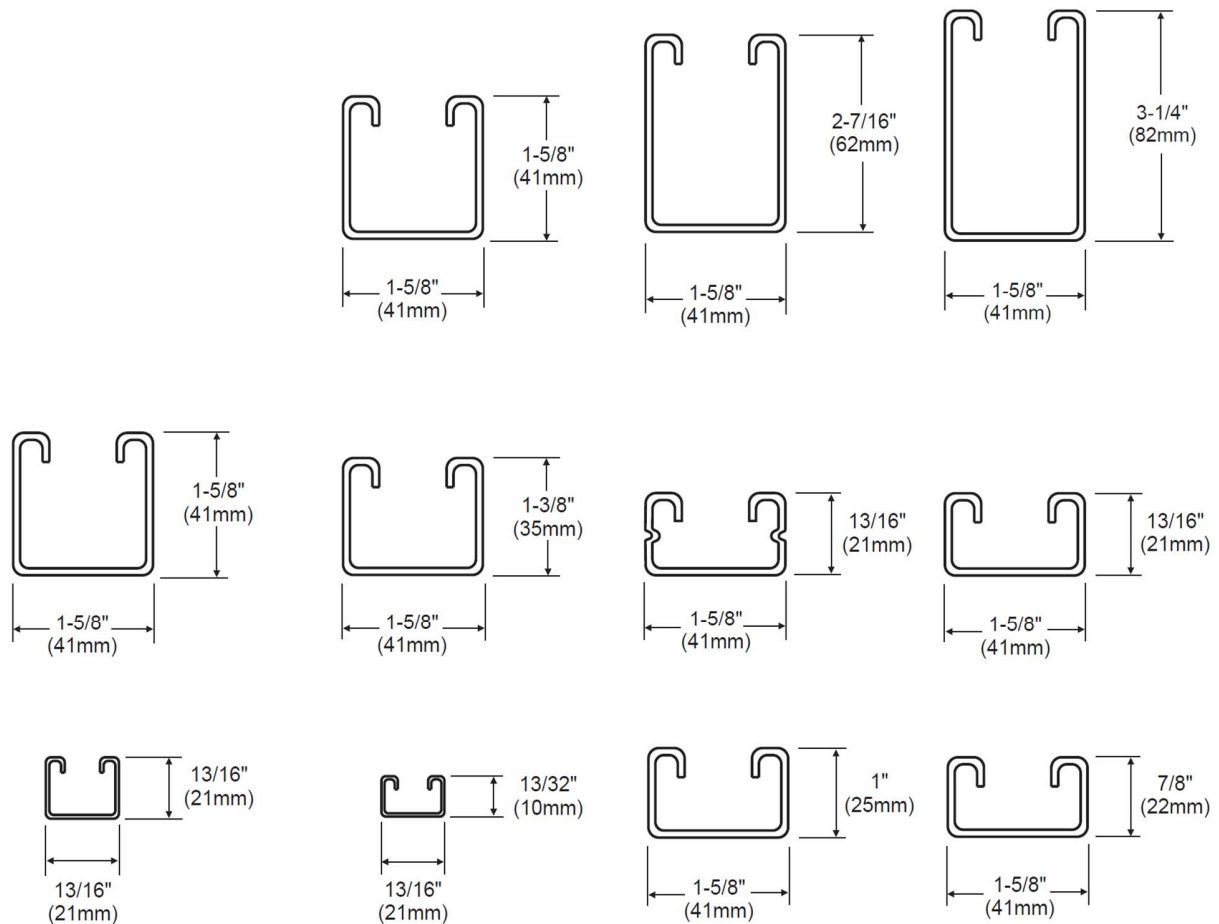
Certification and Testing Reports



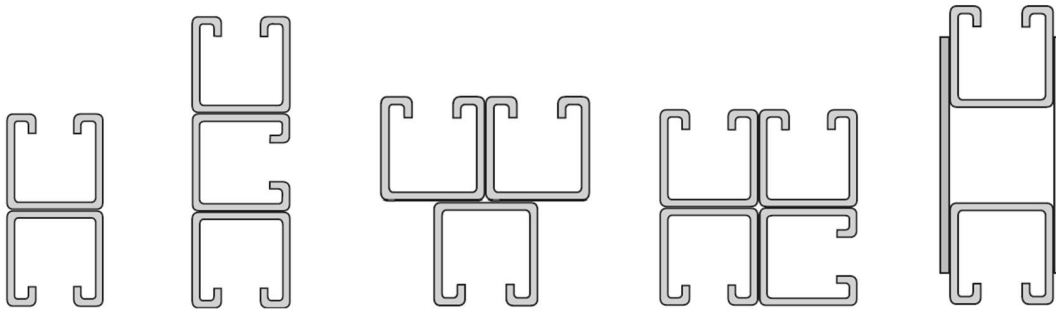
### Strut Framing Systems - Channel Straight Sections

Unistrut channel straight sections are the primary building blocks of the Unistrut metal framing system. These straight lengths of cold-formed steel come in standard C-shaped profiles, providing strong and stable support without the need for welding. They are designed to accept Unistrut's signature spring nuts, allowing fast and secure attachment of brackets, clamps, and accessories.

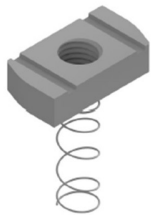
These channels come in various sizes—commonly 41×41 mm, 41×21 mm, or deeper/heavier-duty profiles—so installers can choose the right load capacity for their application. Depending on the environment, they're available in finishes such as pre-galvanised, hot-dip galvanised, stainless steel, or powder-coated options, ensuring durability even in harsh or outdoor conditions.



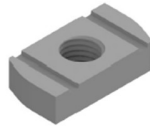
**Strut Framing Systems – Possible Combinations**



**Accessories**



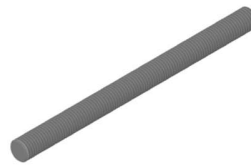
Long Spring  
Nut



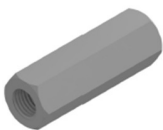
Channel Nut



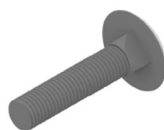
End Caps



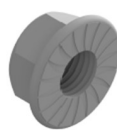
Threaded Rod



Rod Coupler



Square Neck  
Bolt

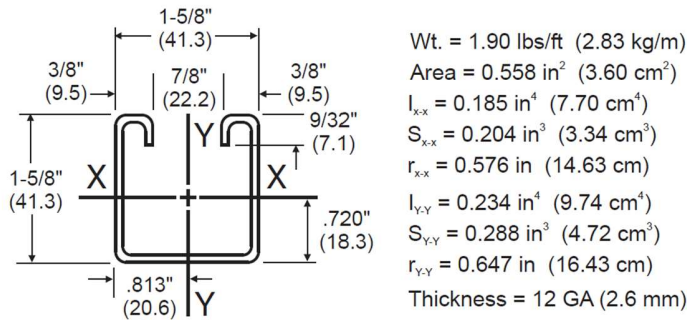


Flange Nut



Wedge Anchor

### Recommendation of Use



Recommendations of Use							
BEAM SPAN OR COLUMN HT.		UNIFORM LOAD		UNIFORM LOAD AT DEFLECTION = 1/240 SPAN		MAXIMUM COLUMN LOAD	
in	mm	lbs	kN	lbs	kN	lbs	kN
24	610	1700	7.62	1700	7.62	8370	37.50
36	914	1133	5.08	1133	5.08	7020	31.45
48	1219	850	3.81	772	3.46	5573	24.97
60	1524	680	3.05	494	2.21	4246	19.02
72	1829	566	2.54	343	1.54	3411	15.28
84	2134	485	2.17	252	1.13	2858	12.80
96	2438	425	1.90	193	0.86	2455	11.00
108	2743	377	1.69	152	0.68	2142	9.60
120	3048	340	1.52	123	0.55	1890	8.47

### Part SKU

WS020 0001	<b>Threaded Rod</b>	Hot-roll low carbon steel zinc-plated electrogalvanized M12
WS020 0002	<b>Single Unistrut</b>	Hot-Dipped Galvanized 41mm X 41mm 2.5m

*\*\*Please consult us for other types*